

port information handbook



Gladstone Ports Corporation

Growth, Prosperity, Community.



Gladstone Ports Corporation

Growth, Prosperity, Community.

Gladstone Ports Coproations Ltd.
Port Information Handbook - Port of Gladsothne
Edition last updated XXXXXX

Contents

1.	PORT OF GLADSTONE OVERVIEW	3
2.	PORT AUTHORITY ROLE AT GLADSTONE	3
3.	HEALTH AND SAFETY	3
4.	PORT OF GLADSTONE	3
4.1.	DESCRIPTION	3
4.2.	ACCESS	4
4.2.1.	<i>Airport</i>	4
4.2.2.	<i>Bus</i>	4
4.2.3.	<i>Rail</i>	4
4.2.4.	<i>Port Roads</i>	4
5.	TERMINAL OPERATOR ROLES AT PORT OF GLADSTONE	6
5.1.	OVERVIEW	6
5.2.	TRADE	7
6.	FACILITIES	8
7.	SERVICES – NAVIGATION AND OPERATION	9
7.1.	REGIONAL HARBOUR MASTER ROLE AT PORT OF GLADSTONE	9
7.2.	REGIONAL HARBOUR MASTER CONTACT DETAILS	9
7.3.	LOCATION	9
7.4.	VESSEL TRAFFIC SERVICE – PORT CONTROL ROLE AT PORT OF GLADSTONE	9
7.5.	EMERGENCY SERVICES	10
7.6.	TUGS	10
7.7.	PILOTAGE	10
7.8.	LINE BOATS	10
7.9.	DEPTHS OF WATER	10
7.10.	TIDES	11
7.11.	ANCHORAGES	11
7.12.	BUNKERING	11
7.13.	QUARANTINE WASTE	11
8.	CONTACTS	12
8.1.	SHIPPING AGENCIES	12
8.2.	THE MISSIONS TO SEAFARERS (PORT OFFICE)	13
8.3.	CONTACTS	13
9.	WHARF CENTRE DRAWINGS	14
9.1.	BOYNE SMELTER	14
9.2.	SOUTH TREES EAST AND WEST	15
9.3.	BARNEY POINT	16
9.4.	AUCKLAND POINT NO 1-4	17
9.5.	AUCKLAND POINT NO 1	18
9.6.	AUCKLAND POINT NO 2	19
9.7.	AUCKLAND POINT NO 3	20
9.8.	AUCKLAND POINT NO 4	21
9.9.	RGTCT NO 1, 2, 3, 4	22
9.10.	RGTCT NO 1, 2, 3, 4	23
9.11.	WIGGINS ISLAND COAL EXPORT TERMINAL	24
9.12.	FISHERMANS LANDING NO 1 AND NO 2	25
9.13.	FISHERMAN'S LANDING NO 4	26
9.14.	FISHERMAN'S LANDING NO 5	27
9.15.	APLNG	28
9.16.	QCLNG	29
9.17.	GLNG	30

1. Port of Gladstone Overview

Formed in 1914, we have been a vital part of the Gladstone community for a century, and the epicentre for economic growth for Queensland.

We are a Company Government Owned Corporation (GOC), responsible for the import of raw material and the export of finished product associated with major industries in the Central Queensland region.

We manage and operate three Port precincts - the Port of Gladstone, Port Alma Shipping Terminal and Port of Bundaberg.

We play an integral role in planning the future of the Port of Gladstone, Port Alma Shipping Terminal and Port of Bundaberg. In consultation with the community, industry and government, we undertake a strategic approach to planning, setting the vision and direction for all three ports for the short and long term.

2. Port Authority Role at Gladstone

As the port authority for Port of Gladstone, Gladstone Port Corporation's roles include:

- facilitating appropriate levels of port security and safety with terminal operators;
- coordinating emergency response;
- protecting the environment by minimising impact of development; and
- being committed to, and having regard for the interests of the community.

Maintaining navigable port depths and pilotage is the responsibility of GPC while port navigation is controlled by Maritime Safety Queensland (MSQ).

3. Health and Safety

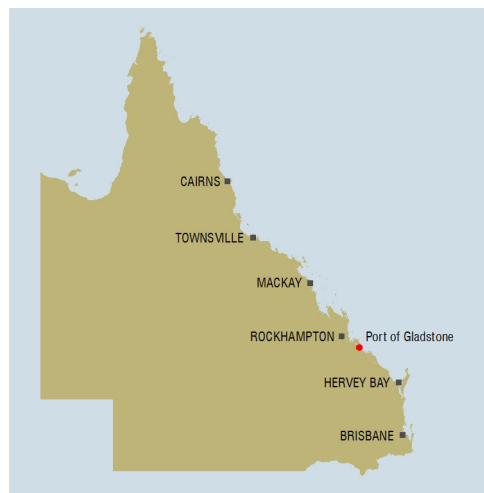
GPC recognises that the health, safety and wellbeing of its personnel are of primary importance. GPC is committed to undertaking its business in a manner that prevents injury or illness to personnel who may be impacted by GPC work activities. We strive for best practice in health & safety management and process safety. GPC is committed to instilling a culture focussed on continuous improvement and sustainability.

4. Port of Gladstone

4.1. Description

The Port of Gladstone is one of Australia's finest natural deep-water harbours located 525 kilometres north of Brisbane and is just south of the Tropic of Capricorn at Latitude of 23°49.61'S, Longitude 151°34.6'E.

The Port of Gladstone is Queensland's largest multi-commodity port, handling over 30 different products. Major cargoes include coal, bauxite, alumina, aluminium and cement. The port has a total throughput of more than 98 million tonnes per annum.



With many natural advantages, such as a deepwater harbour and protected waters; the Port is a convenient point for the worldwide distribution of the wealth of Central Queensland.

With many natural advantages such as a deepwater harbour and protected waters; the Port is a convenient point for the worldwide distribution of the wealth of Central Queensland.

4.2. Access

4.2.1. Airport

Gladstone has a regional airport which offers domestic services and connecting international services from Brisbane.

Hire cars are available at the airport and must be pre-booked from the hire car companies directly.

4.2.2. Bus

The following coach company has daily services to Gladstone from Brisbane.

Greyhound Australia

Telephone: 1300 473 946

Website: www.greyhound.com.au

4.2.3. Rail

There is a freight-only rail link to the main north coast line terminating in ?? rail loops within the Port.

Queensland Rail has passenger rail services to Gladstone.

Telephone: 1300 131 722

Website: <http://www.queenslandrail.com.au/Pages/Default.aspx>

4.2.4. Port Roads

Port users must comply with applicable Queensland road rules on all Queensland roads.

For heavy vehicles, movements inside the Port secure fenced area are subject to approval from the Port Asset and Infrastructure Manager, telephone +61 7 4976 1332.

5. Terminal Operator Roles at Port of Gladstone

5.1. Overview

WHARF	OWNER	OPERATOR	CARGOES
Boyne Wharf	GPC	BSL	Aluminium General Cargo Break Bulk Liquid Pitch
South Trees East	QAL	QAL	Alumina Caustic Soda Bunker Oil
South Trees West	QAL	QAL	Bauxite Bunker Coal
Barney Point	GPC	GPC	
Auckland Point No.1	GPC	GPC	Passenger Liner Magnesia Calcite
Auckland Point No. 2	GPC	GrainCorp	Grain
Auckland Point No. 3	GPC	Multi-User	Petroleum Products Caustic Soda LP Gas Break Bulk
Auckland Point No.4	GPC	Multi-User	General Cargo Containers Gypsum Magnetite Break Bulk Scrap Metal Ammonium Nitrate
RGTCT No. 1	GPC	GPC	Coal
RGTCT No. 2	GPC	GPC	Coal
RGTCT No. 3	GPC	GPC	Coal
RGTCT No. 4	GPC	GPC	Coal
WICET	WICET	WICET	Coal
Fisherman's Landing No. 1	Rio Tinto Yarwun	Rio Tinto Yarwun	Bauxite
Fisherman's Landing No. 2	Rio Tinto Yarwun	Rio Tinto Yarwun	Alumina Caustic Soda
Fisherman's Landing No. 4	GPC	Multi-User	Cement Clinker Cement Fly Ash Caustic Soda
Fisherman's Landing No. 5	GPC	Multi-User	Liquid Ammonia
APLNG	Origin (37.5%) ConocoPhillips (37.5%) Sinopec (25%).	APLNG	Liquefied Natural Gas
QCLNG	Santos 30%; PETRONAS 27.5%; Total 27.5%; KOGAS 15%.	QCLNG	Liquefied Natural Gas
GLNG	Royal Dutch Shell	GLNG	Liquefied Natural Gas

5.2. Trade

Our Ports handle over 30 products, which are transported to more than 30 countries.

The Port of Gladstone is internationally recognised as a major bulk port and our major products include coal, alumina, aluminium and cement.

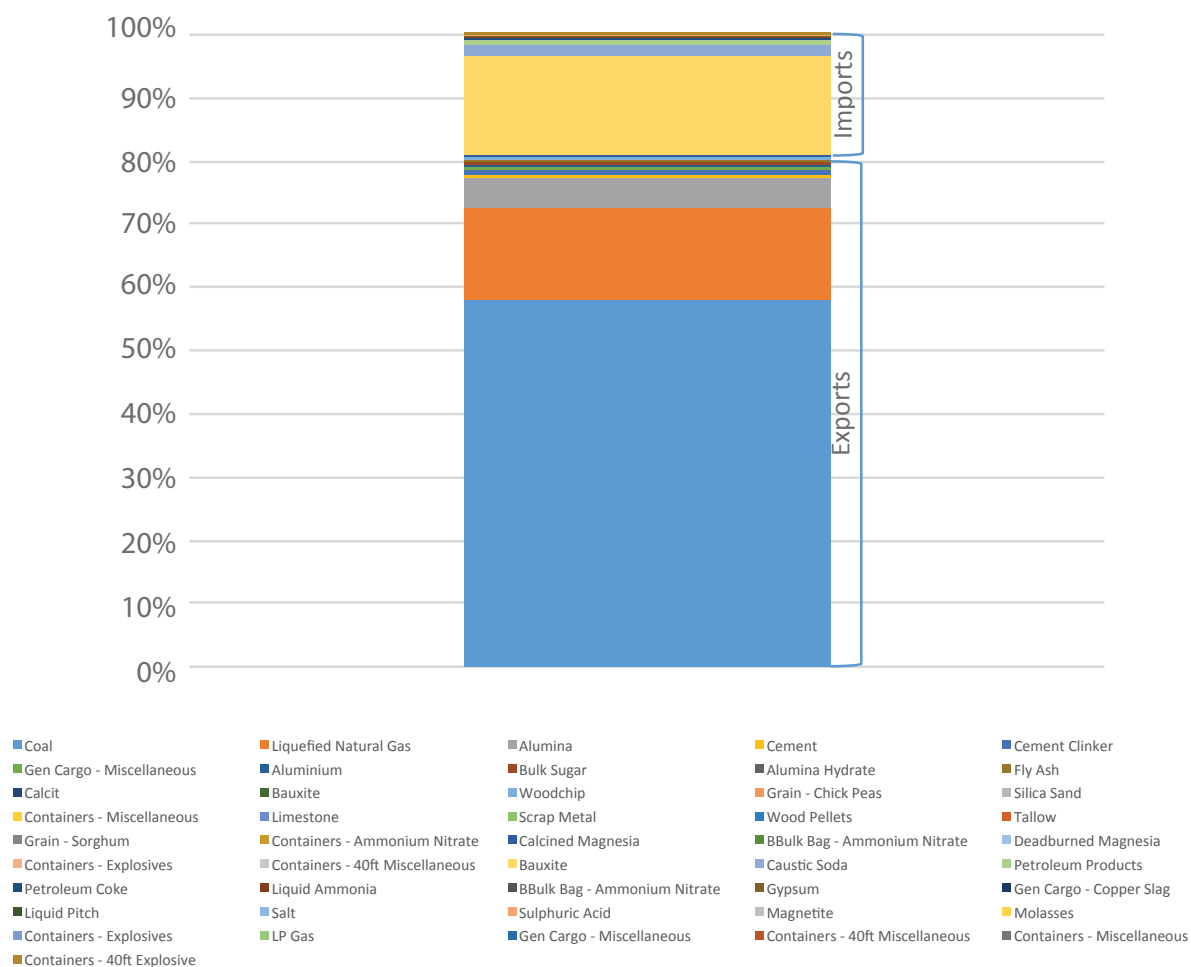
Whilst coal is by far our largest export commodity, we also cater to all forms of containerised and general cargoes. Containerised cargoes are mainly sourced from local major industry and include primarily aluminium, chemicals and cement. General cargoes include breakbulk cargoes such as bagged products and aluminium, project cargo for new/expanding industry and heavy lifts.

Imports

Bauxite	Containers
Caustic soda	Gypsum
Petroleum products	Copper slag
LP gas	Bunker oil
General cargo	Liquid ammonia
Petroleum coke	Magnetite
Liquid pitch	Break bulk

Exports

Coal	Scrap metal
Alumina	Cement
Magnesia	Containers
Grain	Break bulk
Aluminium	Cement clinker
Calcite	Magnesite
Ilmenite	Limestone
Fly ash	Ammonium nitrate
General cargo	Liquefied Natural Gas



6. Facilities

Berth	Berth Pocket (m LAT)	Berth Pocket Length (m)	Berth Pocket Width (m)	Wharf Face (m)	Wharf Width (m)	Wharf Height Above Lat (m)	Wharf Length incl Mooring Dolphins (m)	Bollard Capacity (t)	Max Vessel DWT (t)	Max Berthing Displacement (t)	Max Vessel LOA (m)	Air Draft (m) LAT	Shiploader Type	Design rate maximum capacity of loader (tph) or (mt3/h)	Length of travel (m)	Power (Shore)	Water RW = Raw Water P = Potable	Fuel BV= Bunkering Vessel T = Truck	Comments
Boyne Smelter	15.0	355.0	50.0	250.0	40.0	6.1	396.7	W 100 D 60	60,000	75,000	230.0	26	Mobile Gantry Vacuum Ship Unloader	400	200	No	P	BV	W = Wharf D = Dolphins
South Trees East (Alumina) (Caustic /Fuel Oil)	12.8	270.9	50.0	239.0	19.5	6.0	356.4	50	110,000	110,000	200	26	Boom/telescopic loader	1,500	192.3	No	RW	BV	
	12.8	270.9	50.0	239.0	19.5	6.0	356.4	120	110,000	110,000	230	22	300NB marine unloading arm	NA	NA	No	RW	BV	
South Trees West	12.8	270.9	50.0	239.0	19.5	6.0	312.5	120	90,000	110,000	255	14.5	Travelling Gantry Ship unloader	3,300	184	No	RW	BV	
Barney Point	15.0	320.0	48.0	206.7	15.8	6.1	457.0	75/50	150,000*	87,000	270	17.7	Mobile Gantry Shiploader	2,000	176	No	P	BV	*Draft Restricted
Auckland Point No 1	11.3	259.0	40.0	173	16.0	5.6	270.0	50	65,000	45,000	238	15.9	NA	1,600	106	No	P	BV or T	
Auckland Point No 2	11.3	255.0	40.0	198	22.0	5.5	250.0	50	60,000	32,000	198	17.5	Mobile Gantry Shiploader	1,600	118	No	P	BV or T	
Auckland Point No 3 (Fuel) (Containers) (Other)	11.3	230.0	40.0	217	20.0	5.6	270.0	50	35,000*	55,000	190	NA	NA	NA	NA	No	P	BV or T	*larger dependant on nearby vessel
	11.3	230.0	40.0	217	20.0	5.6	270.0	50	35,000*	55,000	190	NA	NA	NA	NA	No	P	BV or T	*larger dependant on nearby vessel
	11.3	230.0	40.0	217	20.0	5.6	270.0	50	35,000*	55,000	190	NA	NA e	NA	NA	No	P	BV or T	*larger dependant on nearby vessel
Auckland Point No 4	11.4	300	40.0*	220.0	33.9	5.5	336	100	70,000	85,000	255	NA	Mobile Container Crane. Large **	NA	NA	No	P	BV or T	*unrestricted **multi purpose wharf area.
RG Tanna Coal Terminal No 1	18.8	380.0	70.0	350.5	14.3	12.3	412.7	100/60	220,000	140,000	315	18.5	Mobile Gantry Shiploader	6,000	continuous	No	P	BV	
RG Tanna Coal Terminal No 2	18.8	369.4	70.0	384.5	14.3	12.3	384.5	100/60	220,000	140,000	315	18.5	Mobile Gantry Shiploader	6,000	continuous	No	P	BV	
RG Tanna Coal Terminal No 3	18.8	388.9	70.0	374.0	14.3	12.3	388.0	100/60	220,000	140,000	315	18.5	Mobile Gantry Shiploader	6,000	continuous	No	P	BV	
RG Tanna Coal Terminal No 4	18.8	390.0	70.0	382.0	14.3	12.3	418.0	100/60	220,000	140,000	315	18.5	Mobile Gantry Shiploader	6,000	continuous	No	P	BV	
Wiggins Island Coal Terminal	18.8	431.0	71.0	390.5	26.0	11.75	378.0	12* 100t and 14* 60t Quick Release Hooks	220,000	191,000.	320	21.0	Longitudinal travel along quay line, shuttle inboard & outboard reach, hoist luffing	8,250	240	Yes	No	Not Permitted	Shore Power – HV Mainline connection and back-up generator.
Fishermans Landing No 1	12.9	296.8	65.0	310.2	19.3	8.3	310.2	100	80,000	90,000	235	29.5	Mobile Gantry Ship clamshell unloader	1,000	170	No	RW	BV	
Fishermans Landing No 2 (Alumina) (Bauxite) (Caustic)	12.9	296.8	65.0	252.4	18.7	8.3	314.1	100	80,000	90,000	235	29.5	Mobile Gantry Shiploader	1,500	170	No	RW	BV	
	12.9	296.8	65.0	252.4	18.7	8.3	314.1	100	80,000	90,000	235	29.5	Travelling Gantry Ship unloader	2,4000	170	No	RW	BV	
	12.9	296.8	65.0	252.4	18.7	8.3	314.1	100	80,000	90,000	235	29.5	Marine Unloading Arm	1,000	120	No	RW	BV	
Fisherman's Landing No 4	11.2	226.0	50.0	135	9.0	6.5	234.2	100	25,000	31,000	190	20.5	Pivoting Radial Arm	2,000	108	No	limited	BV	
Fisherman's Landing No 5	11.2	374.0	50.0	85.2	20.0	7.1	205.7	60	35,000	44,000*	200**	NA	2 x Liquids loading arms 300mm	NA	NA	No	No	BV	* Draft restricted ** longer vessels to be assessed.
APLNG	13.0	325.0	50.0	97.5	46.0	10.47	357.5	150	106,898	143,000	316	NA	3 X Liquid 1 X Hybrid (Vapour or Liquid) 1 X Vapour	12,500 m3/hr	NA	No	No	No	Wharf Face (metres): 97.5 (Distance between Fenders for Parallel Body)
QCLNG	14.0	365.0	60.0	110	30.0	9.0	345.0	150	NA	146,950	315	NA	NA	12,000m3/hr	NA	No	No	No	Repatriation and shore leave allowed. Lifting of stores not allowed during cargo operations. Standby tug available.
GLNG	13.0	496.0	100.0	*115	0.0	7.00	**372	150	121,000	153,000	315	NA	NA	10,000m3/hr	NA	No	No	No	*Distance between Centre line to centre line of the Extreme Fenders. ** Distance between Centre line to centre line of the Extreme Dolphins

7. Services – Navigation and Operation

7.1. Regional Harbour Master Role at Port of Gladstone

Shipping legislation in Queensland is controlled by the State Government agency, Maritime Safety Queensland (MSQ). It is MSQ's charter to protect Queensland's waterways and the people who use them. MSQ has six regions within Queensland, each of which is controlled by a Regional Harbour Master.

Regional Harbour Masters are responsible for:

- improving maritime safety for shipping and small craft through regulation and education;
- minimising vessel-sourced waste and providing response to marine pollution;
- providing essential maritime services such as Vessel Traffic Services (VTS) and aids to navigation; and
- encouraging and supporting innovation in the maritime industry.

For the most current information on these areas, it is recommended that contact be made with the closest office.

7.2. Regional Harbour Master Contact Details

Physical address: Level 7
22 Yarroon Street
Gladstone Queensland 4680

Postal address: PO Box 123, Gladstone Queensland 4680

Phone: +61 7-4971 5200

Fax: +61 7-4971 5243

Email: RHMGladstone@msq.qld.gov.au

7.3. Location

The Port of Gladstone is located in the area surrounding Latitude of 23°49.61'S, Longitude 151°34.6'E.

7.4. Vessel Traffic Service – Port Control Role at Port of Gladstone

Operating within the Port Control Centre, the role of the Vessel Traffic Service (Gladstone VTS) at Gladstone is to coordinate the scheduling of shipping, facilitate the safe and efficient movement of shipping within the pilotage area and coordinate initial emergency response to marine incidents.

Operated by MSQ, Gladstone VTS provides a 24 hours, seven days a week marine operations service to the port community. For ship traffic scheduling, approval of shipping movements, response to pollution incidents and reporting of defective navigation aids, please direct initial enquiries to the port control centre call sign 'Gladstone VTS' using the contact details below.

In the event of an emergency, Gladstone VTS is the key notification and communications facility that will activate the appropriate response agencies.

VHF radio: VHF 13 and 16

Phone: +61 7 4971 5208

Fax: +61 7 4971 5212

Email: VTS-Gladstone@msq.qld.gov.au

7.5. Emergency Services

GPC has developed an Emergency Response Plan that covers situations such as cyclones, marine incidents, bomb threats, fire, explosion or fatalities. Copies of the Response Plan are held at GPC's office in the Port, by the Regional Harbour Master and by a number of port users and other key agency contacts.

Where a non-marine incident is caused through the activities of a port user on port land, the initial response is the responsibility of the port user. GPC and Gladstone VTS can be contacted on VHF 16 and they will coordinate the required response based on procedures detailed in the GPC Emergency Response Plan for the Port of Gladstone. For local emergency services telephone 000 and specify if fire, ambulance or police are required.

7.6. Tugs

Tugs are an aid to the safe and efficient manoeuvring of ships in confined waterways. While it is possible to berth and sail ships in certain tide and weather conditions without the aid of tugs, the experience of the port has dictated the following guidelines to reflect safe practice. Special circumstances may vary the tug requirement from the guidelines indicated in section 9 of the Gladstone Port Procedures Manual

Gladstone Port Procedures Manual: Section 9 – Tug procedures

7.7. Pilotage

The Transport Operations (Marine Safety) Act 1994 specifies that, unless a current pilotage exemption certificate (PEC) is held by the master of a ship, pilotage is compulsory for:

- a ship that is 50 metres or more
- a vessel towing another vessel where the combined length of the vessels is 50 metres or more
- a ship whose owner or master asks for the services of a pilot
- a ship whose master is directed by the harbour master to use the services of a pilot.
- LNG vessels will require two pilots for the transit

GPC provides pilotage services at the Port of Gladstone. Should a pilot be required, the following periods of notice apply:

Arrivals	24 hours
Removals	24 hours
Departures	24 hours

7.8. Line Boats

There are line boats available at Gladstone for berthing operations.

7.9. Depths of Water

Please check the latest Notice to Mariners for the Port of Gladstone at: <https://www.qld.gov.au/transport/boating/notices/capricorn-coast/gladstone/index.html> for the most current depth information.

7.10. Tides

The mean spring tidal range is 3.24 metres and the mean neap range is 1.54 metres.
Further Information can be found at

Gladstone Port Procedures Manual: Section 6 – Weather information

7.11. Anchorages

Vessels arriving off the port of Gladstone will be assigned a designated anchorage position by VTS, whilst awaiting berthing instructions. These anchorages are shown on the appropriate charts and are identified by either northern or eastern and a numeral.

Further Information can be found at

Gladstone Port Procedures Manual: Section 5 – Port Infrastructure

7.12. Bunkering

Bunkering services are operated by International Bunker Supplies, providing quality marine fuels. The bunker barge is available to service vessels in the inner anchorage and at the outer anchorage weather permitting.

International Bunker Supplies Pty Ltd
+61 3 9211 9333

7.13. Quarantine Waste

The provision of adequate port waste reception facilities for ship-generated waste is vital to preventing marine pollution. Gladstone Ports Corporation offers a service, for more information please refer: GPC Waste Service

8. Contacts

8.1. Shipping Agencies

Asiaworld Shipping Service Pty Ltd

Phone: +61 7 3839 4235
Mobile: +61 408 344 298 (Matthew Windsor)
Mobile: +61 409 825 775 (Alan Mann)
Fax: +61 7 3839 7430
Email: ops.Brisbane@asiaworld.com.au
Web: www.asiaworld.com.au

Australian Ships Agencies – Gladstone

Phone: +61 7 4972 2088
Fax: +61 7 4972 5091

Gladstone Port Logistics Pty Ltd

Phone: +61 7 49727311
Fax: +61 7 4972 7322
Email: ops@gpl.net.au

Gulf Agency Company (Australia) Pty Ltd

Phone: +61 7 4972 8879
Fax: +61 7 4972 9450
Email: shipping.gladstone@gac.com

Inchape Shipping Services

Phone: +61 7 4972 2088
Fax: +61 7 4972 4823
Email: Gladstone@ISS-Shipping.com.au
Web: www.ISS-Shipping.com

Ironmonger Shipping Agencies Pty Ltd

Phone: +61 7 4972 6388
Fax: +61 7 4972 3440
Email: shipping@ironmonger.net.au

LBH Australia

Phone: +61 7 4829 5229
Fax: +61 7 4976 9890
Email: gladstone@lbhaustralia.com

Monson Agencies Australia (Gladstone)

Phone: +61 7 4972 8344
Fax: +61 7 4976 9884
Mobile: +61 7 400 390 014
Email: gladstone@monson.com.au
Web: www.monson.com.au

Sturrock Grindrod Maritime

Phone: +61 7 4972 5588
Fax: +61 7 4972 5681
Email: www.sturrockgrindrod.com

Wilhelmsen Ship Service Pty Ltd

Phone: +61 7 4972 8833
Fax: +61 7 4836 4769
Email: wss@gladstone.wilhelmsen.com
Web: www.wilhelmsen.com

8.2. The Missions to Seafarers (Port Office)

Physical address – Corner Alf O'Rourke and Bryan Jordan Drive, Gladstone Queensland 4680

Postal address – PO Box 370, The Marina, Gladstone Queensland 4680

Telephone – 4972 0355

Facsimile – 4972 0455

Web – <http://www.mts.org.au>

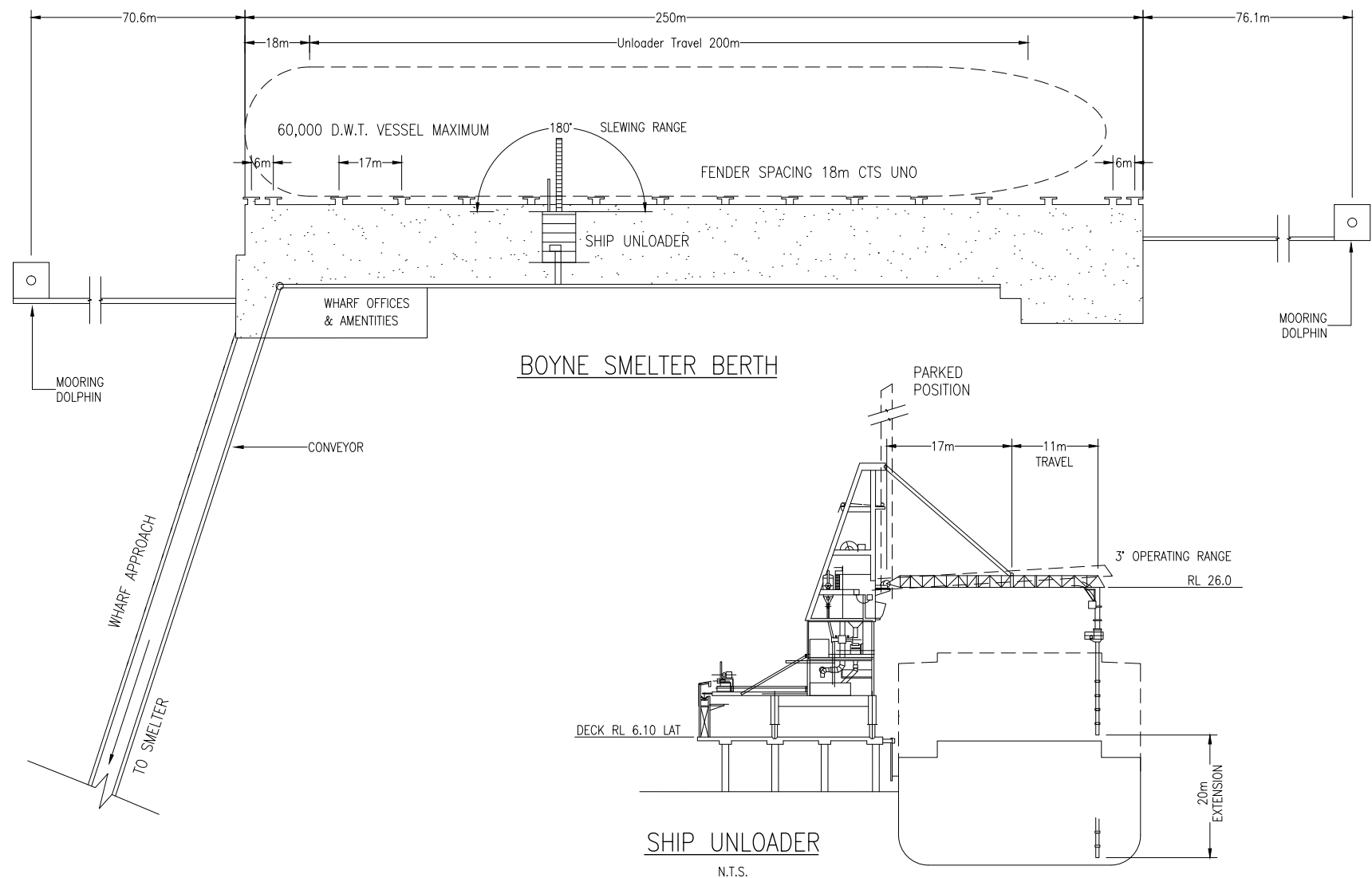
Email – gladstone@mts.org.au

8.3. Contacts

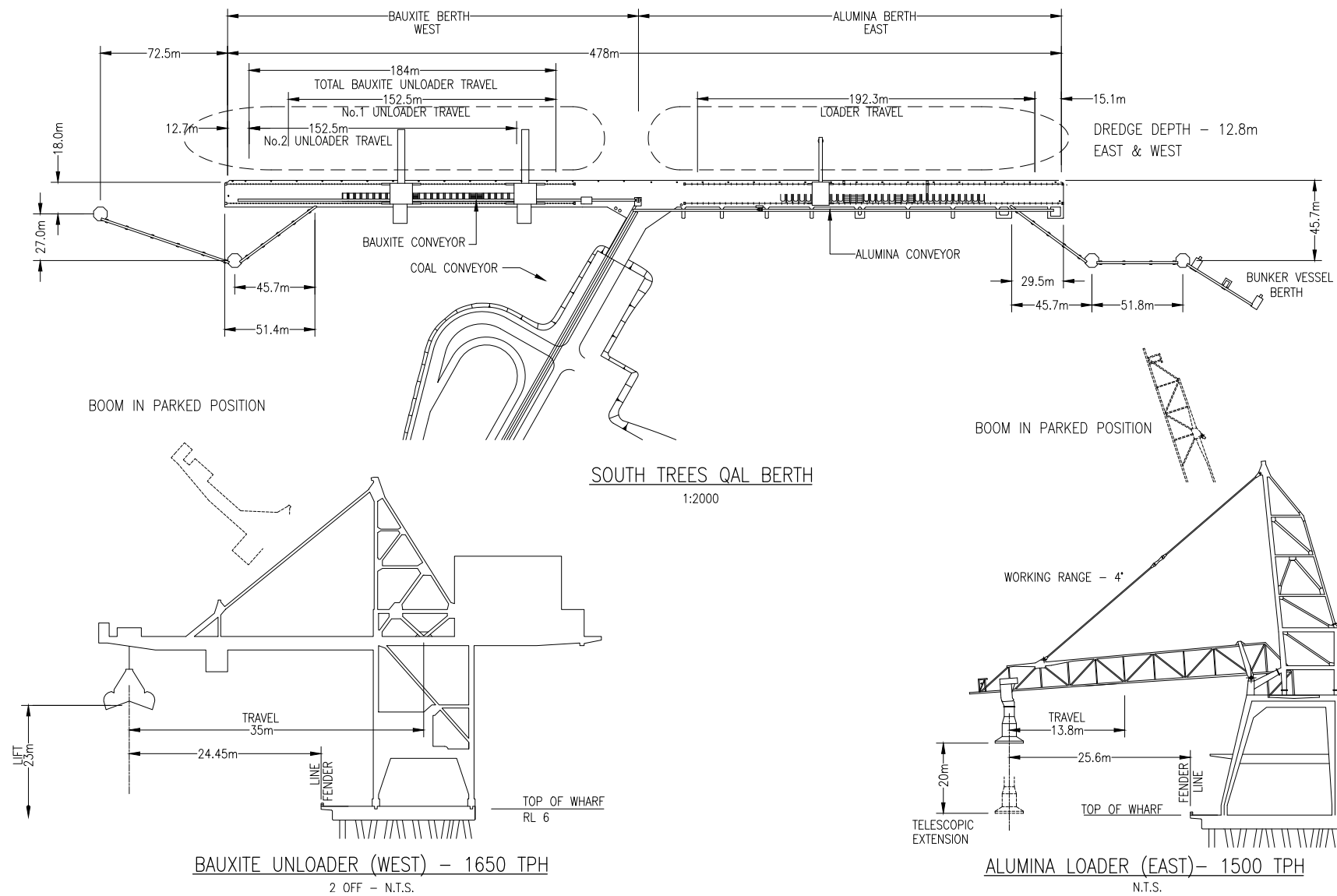
Australian Department of Immigration and Border Protection	+61 7 4976 3600
Gladstone Water Police	+61 7 4971 2650
International Bunker Supplies Pty Ltd	+61 3 9211 9333
Department of Environment and Resource Management	+61 7 4971 6500
Department of Agriculture and Water Resources	+61 3 8318 6700
Queensland Boating and Fisheries Patrol (Yeppoon – services Gladstone)	+61 7 4933 6404
Volunteer Marine Rescue	+61 7 4972 3333
Gladstone Regional Council	+61 7 4970 0700

9. Wharf Centre Drawings

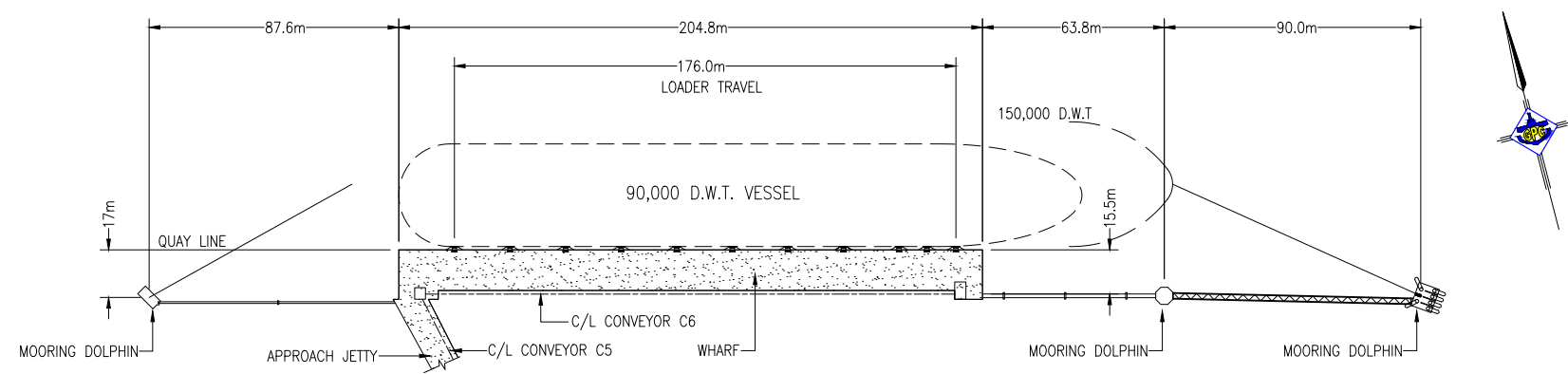
9.1. Boyne Smelter



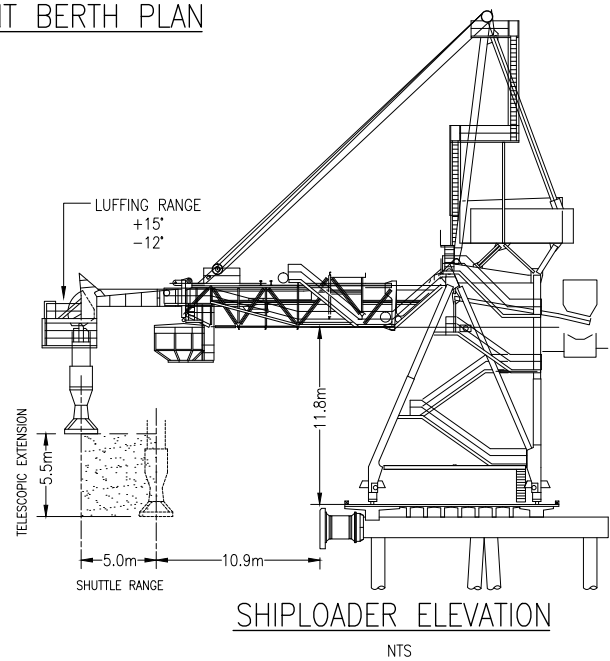
9.2. South Trees East and West



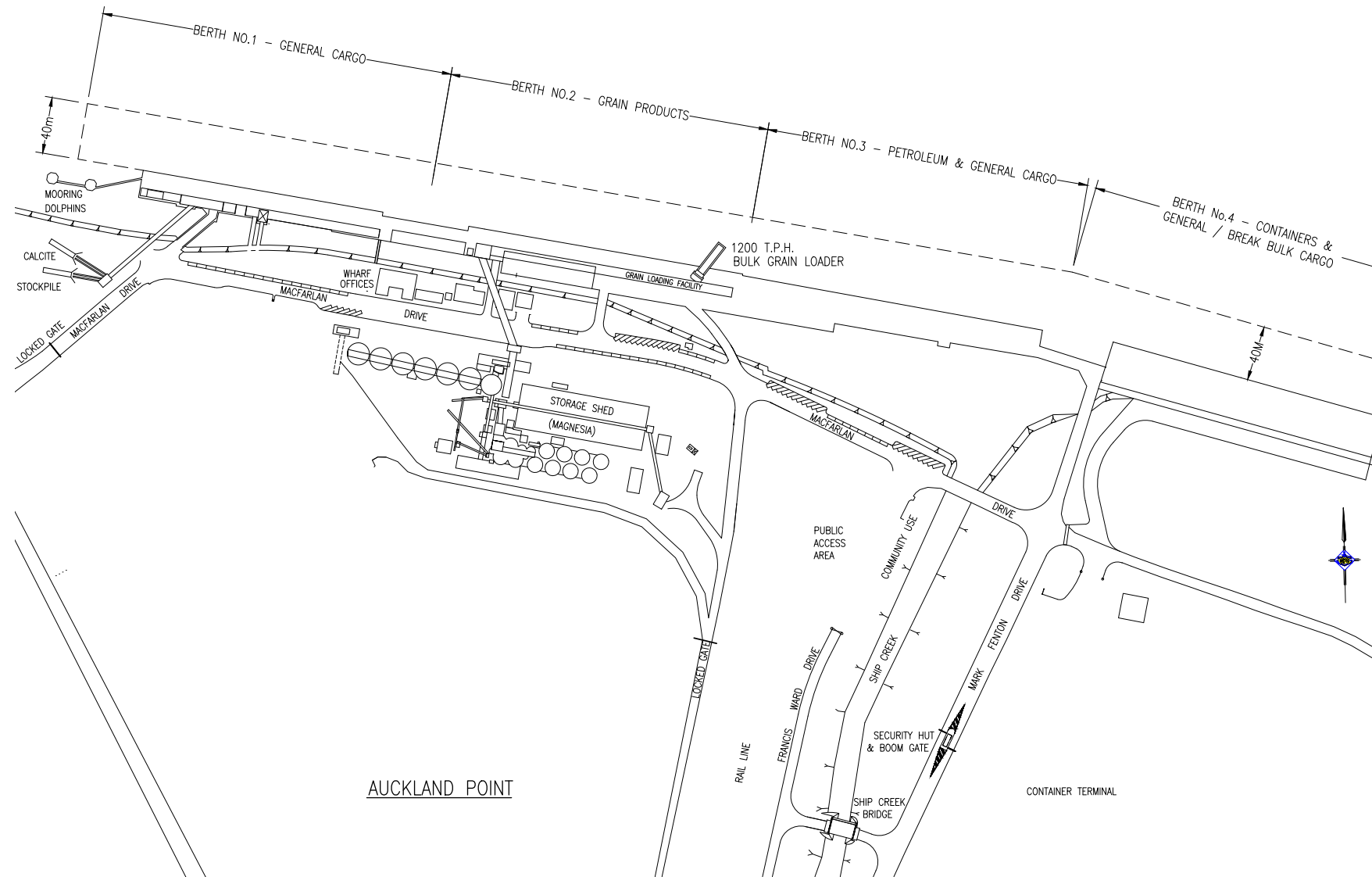
9.3. Barney Point



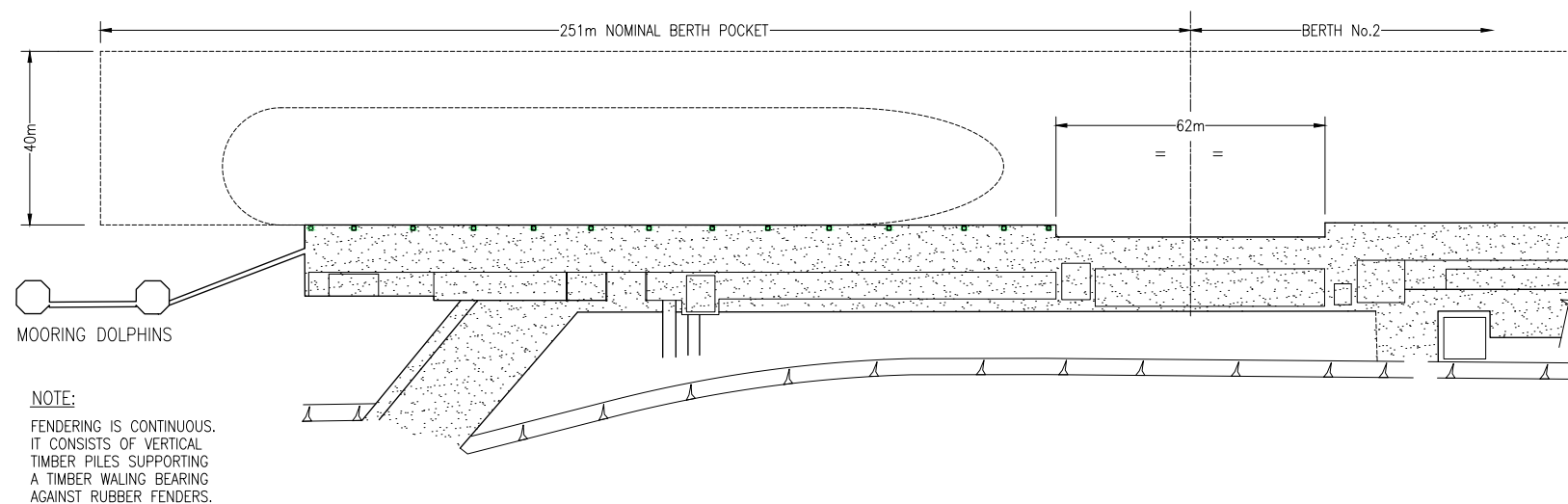
BARNEY POINT BERTH PLAN



9.4. Auckland Point No 1 -4

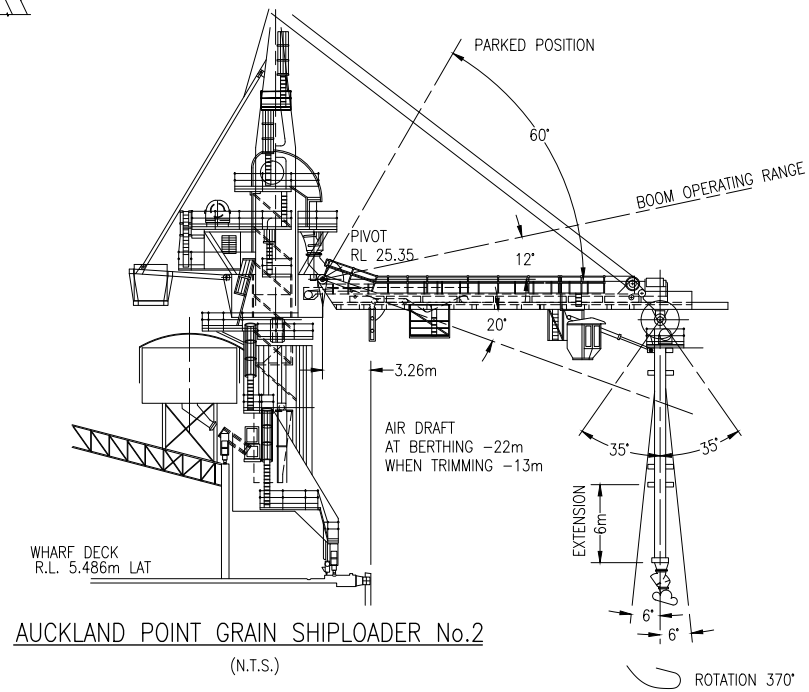
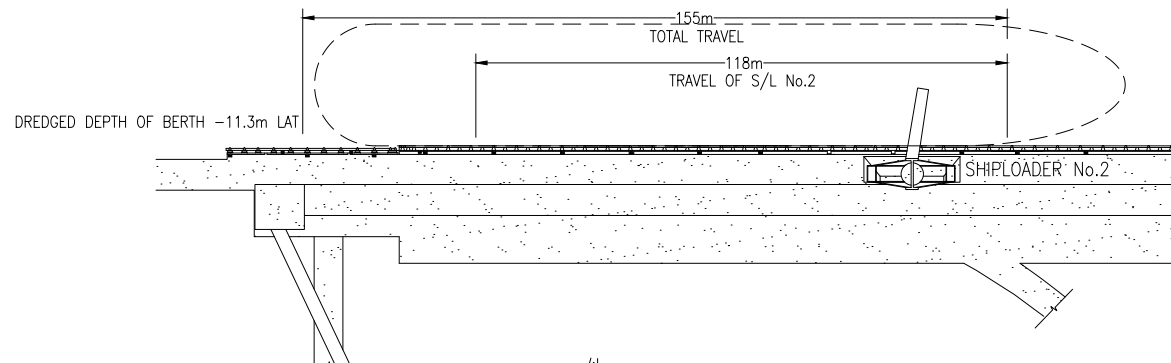


9.5. Auckland Point No 1

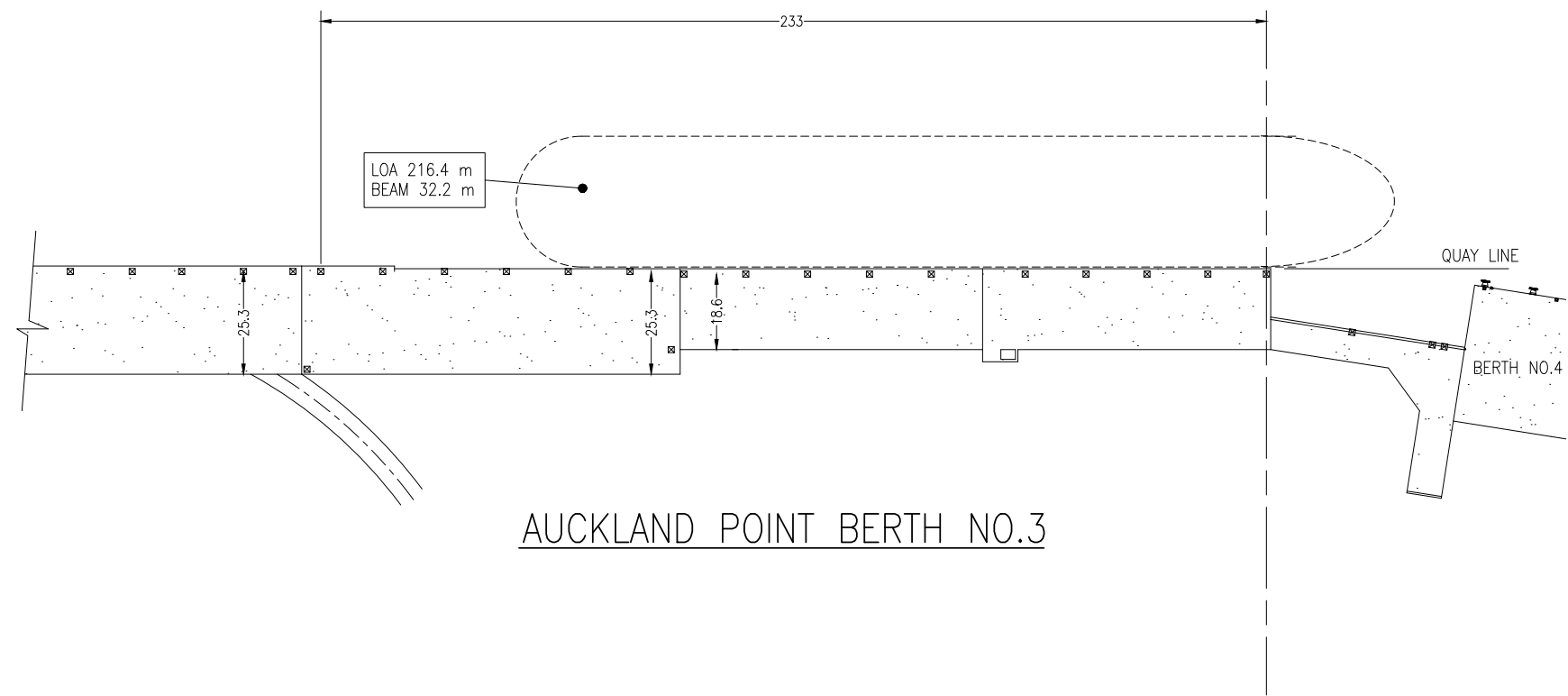


AUCKLAND POINT BERTH NO.1

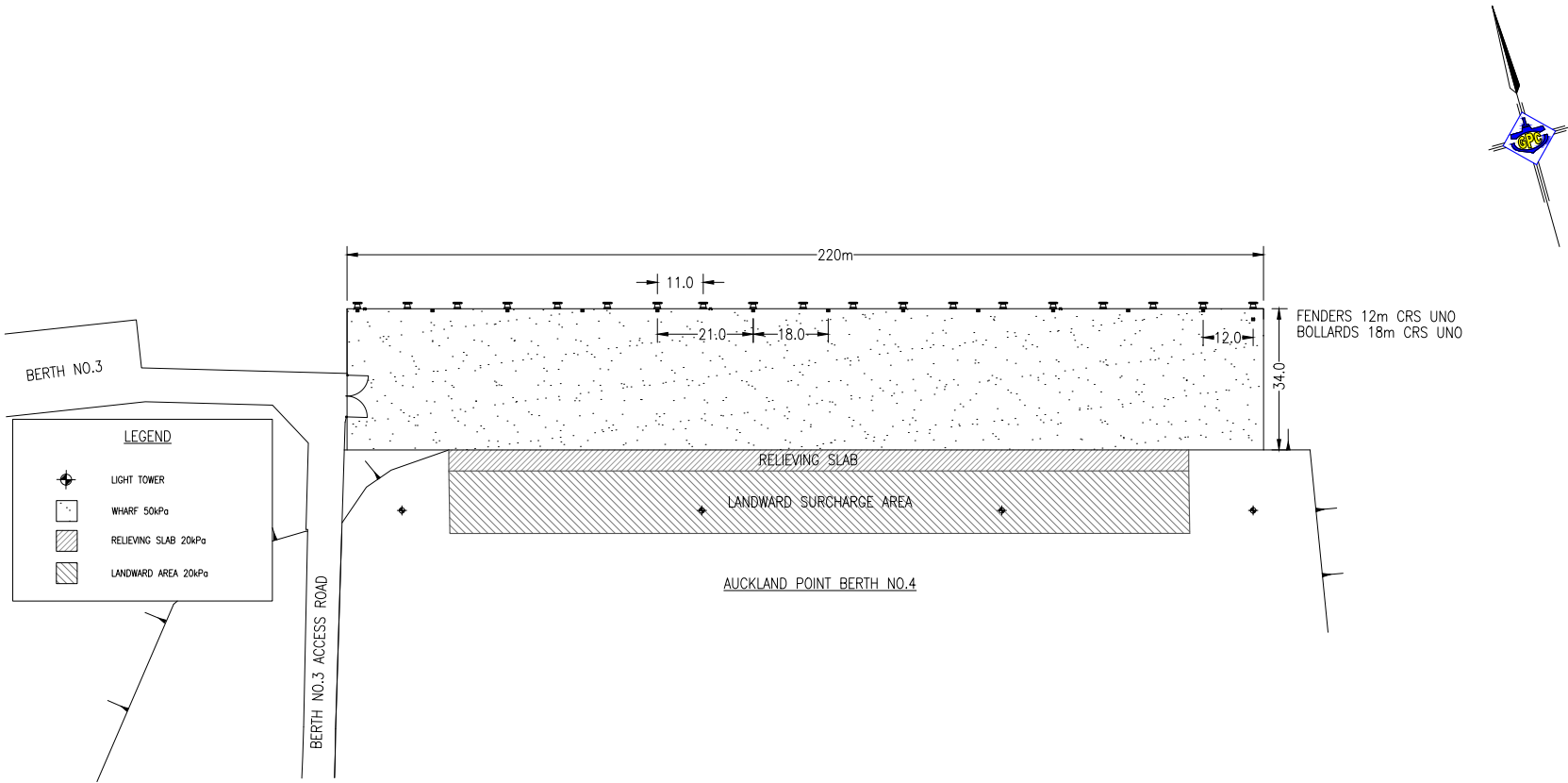
9.6. Auckland Point No 2



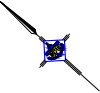
9.7. Auckland Point No 3



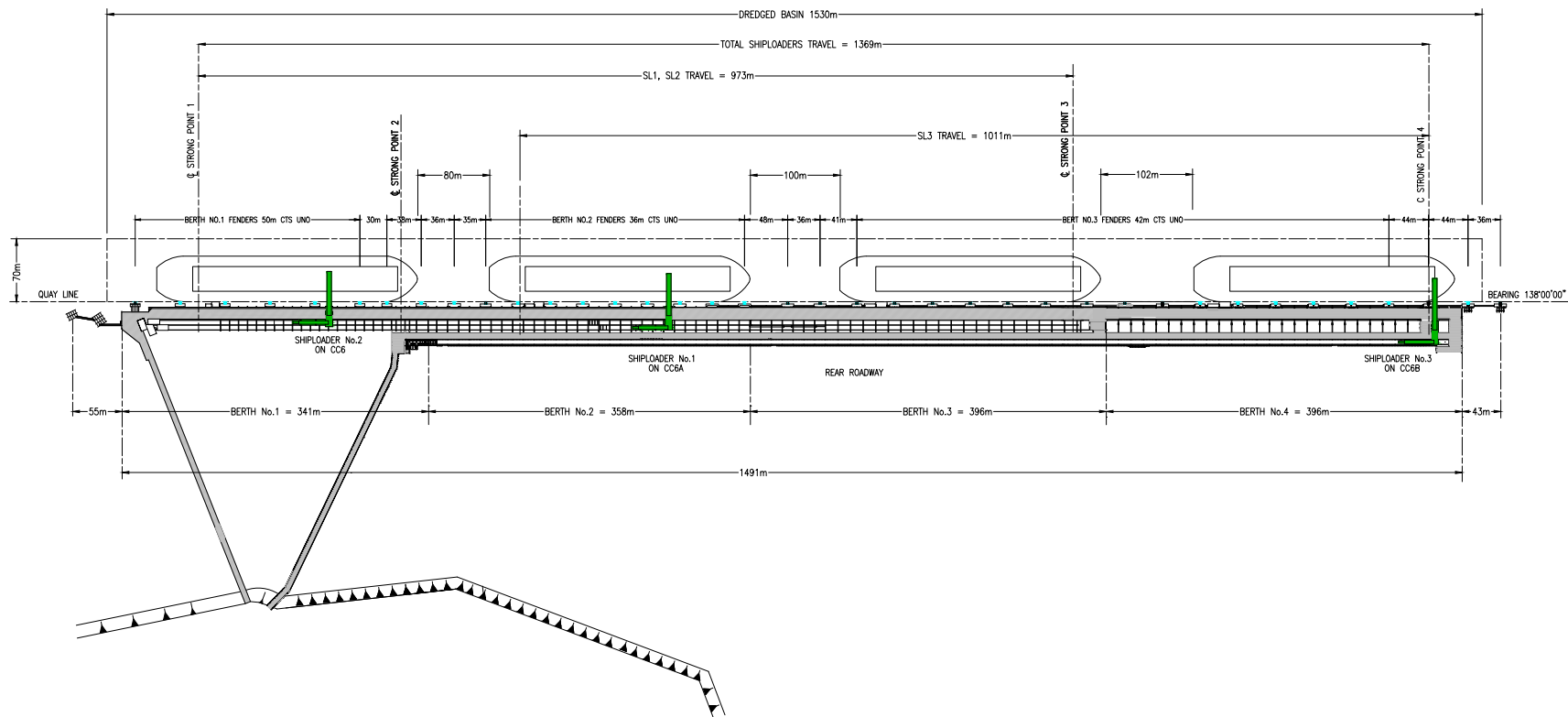
9.8. Auckland Point No 4



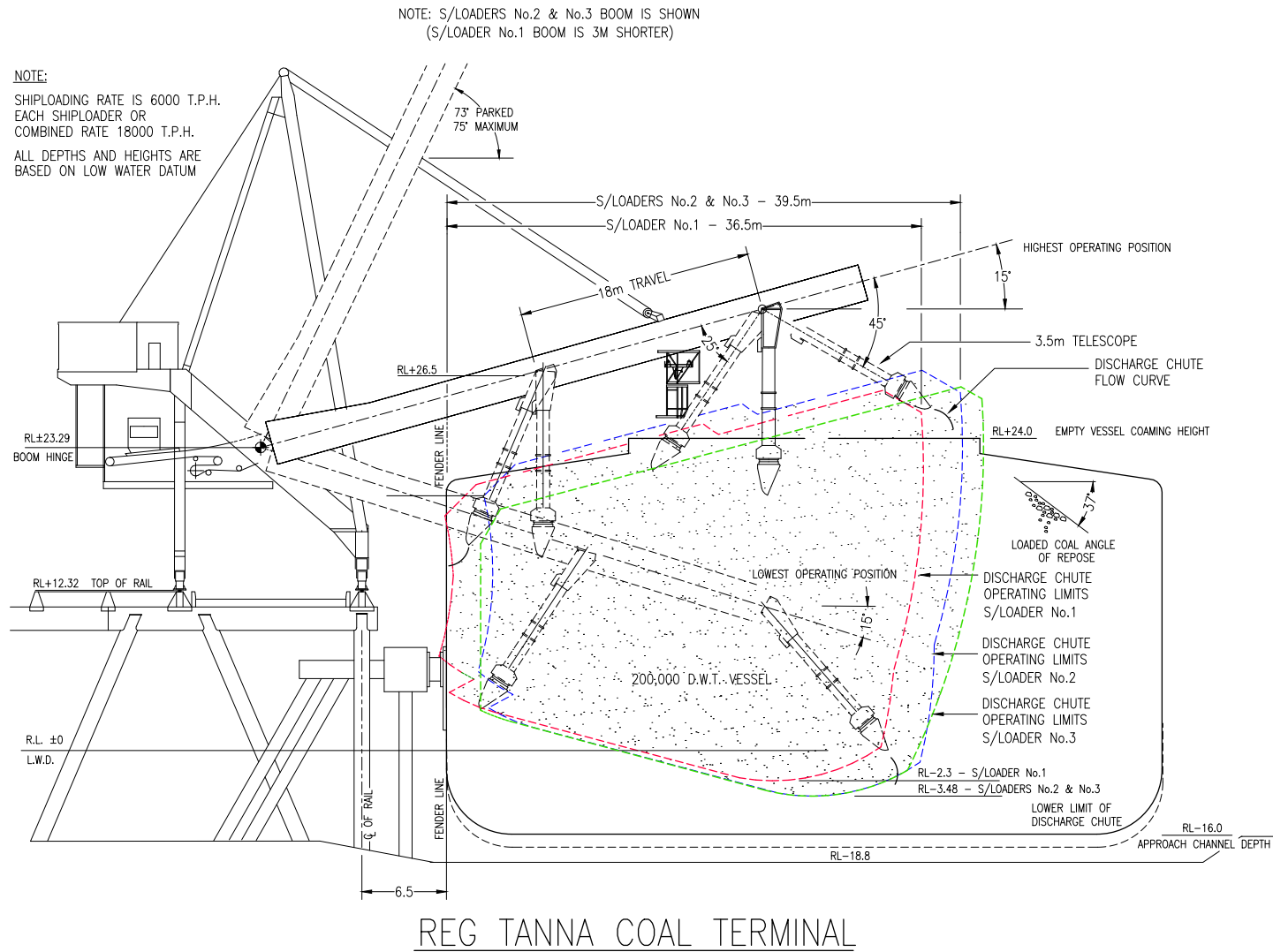
9.9. RGTCT No 1, 2, 3, 4



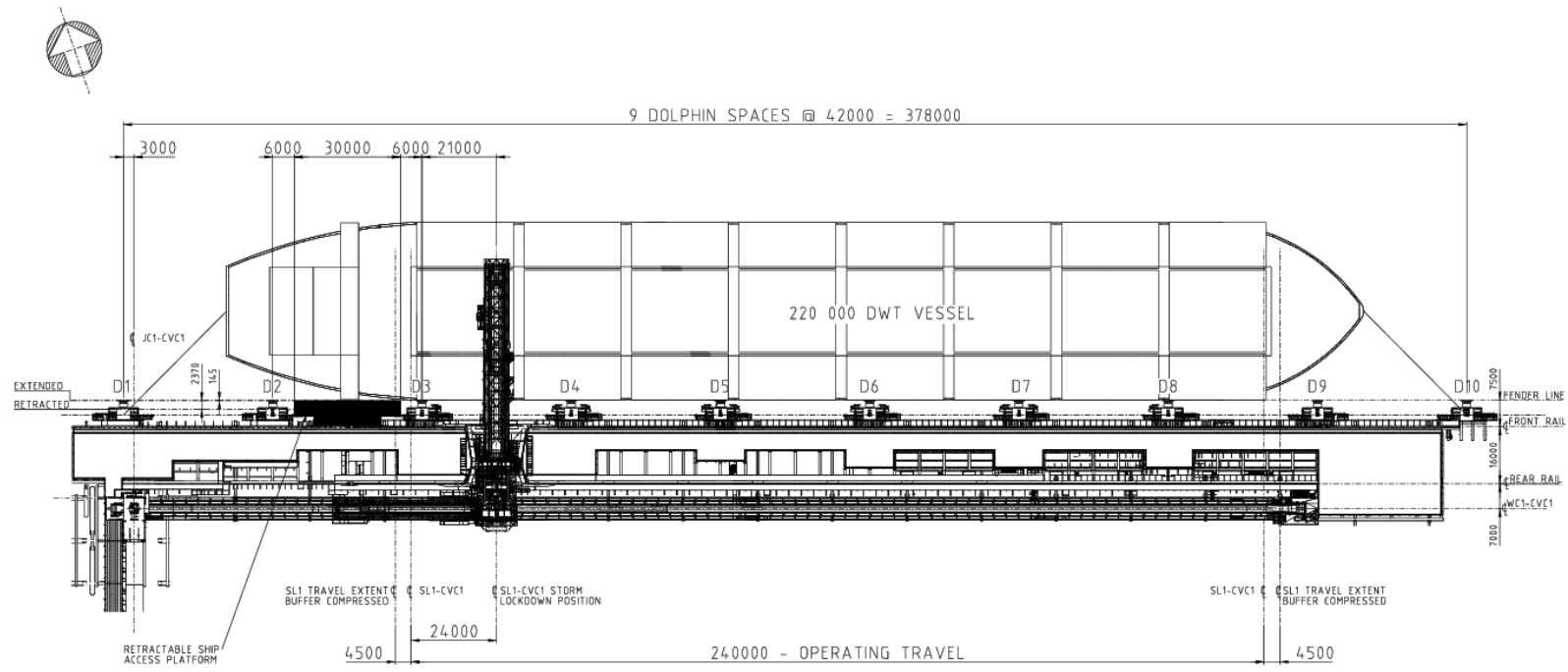
CLINTON COAL WHARF



9.10. RGTCT No 1, 2, 3, 4



9.11. Wiggins Island Coal Export Terminal



DOLPHIN	QUICK RELEASE MOORING HOOKS
D1	4 x 100T
D2	2 x 100T
D3	2 x 60T
D4	2 x 60T
D5	2 x 60T
D6	2 x 60T
D7	2 x 60T
D8	2 x 60T
D9	2 x 100T
D10	4 x 100T

BERTH 1

FOR INFORMATION

A 26/11/14 INFORMATION

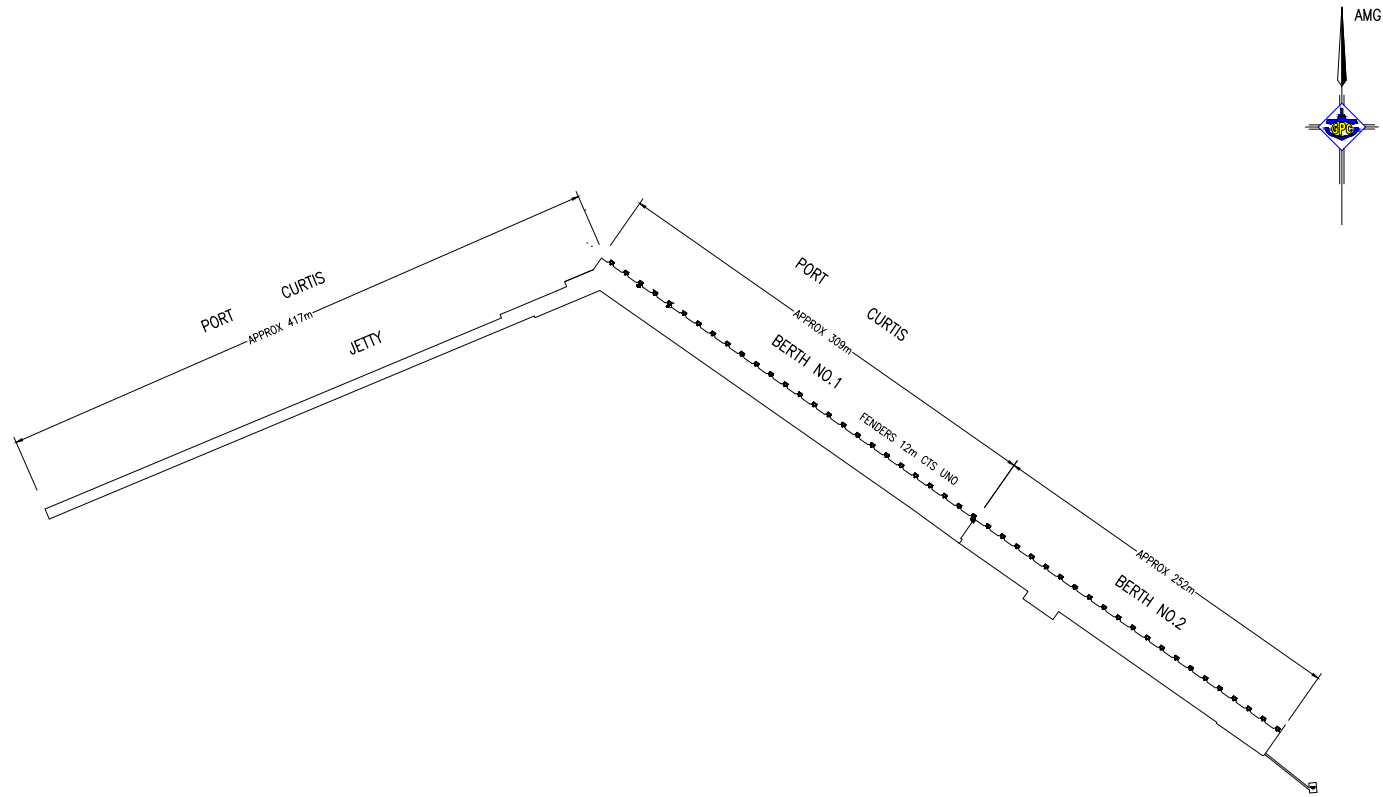
CRG KVA LFW SJM

CRG C GOODRICH 26/11/14
KVA K ABEY 26/11/14
LFW L WILLIAMS 26/11/14
SJM S MARLEY 26/11/14
WIGGINS ISLAND COAL TERMINAL
LOADING - WHARF - STAGE 1
MOORING DETAILS
PLAN LAYOUT

N.T.S.

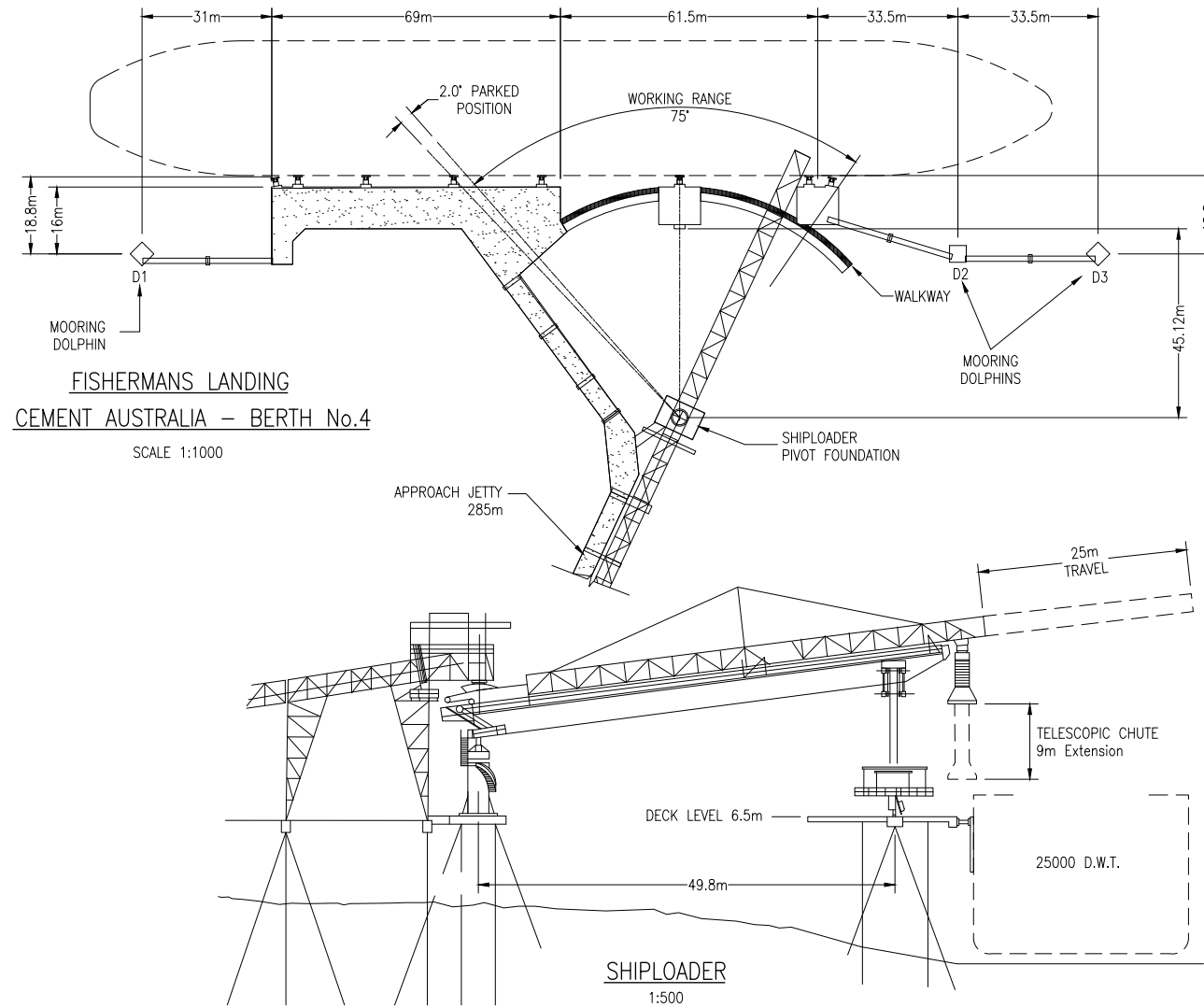
1431-W-SK-0060 A

9.12. Fishermans Landing No 1 and No 2

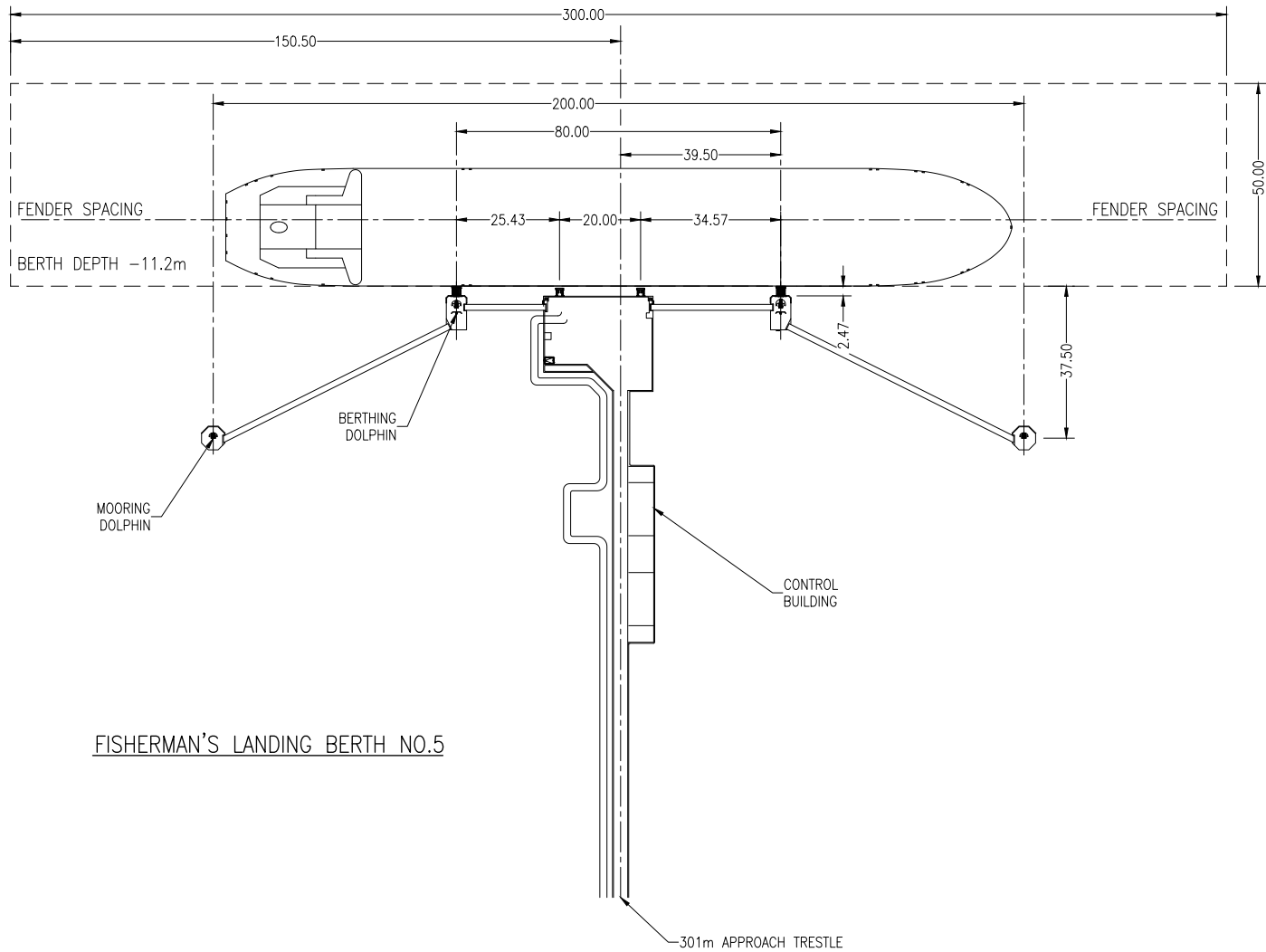


FISHERMAN'S LANDING BERTH NO.1 & 2

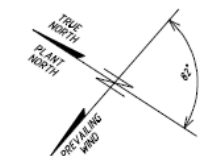
9.13. Fisherman's Landing No 4



9.14. Fisherman’s Landing No 5



9.15. APLNG

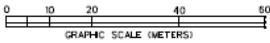
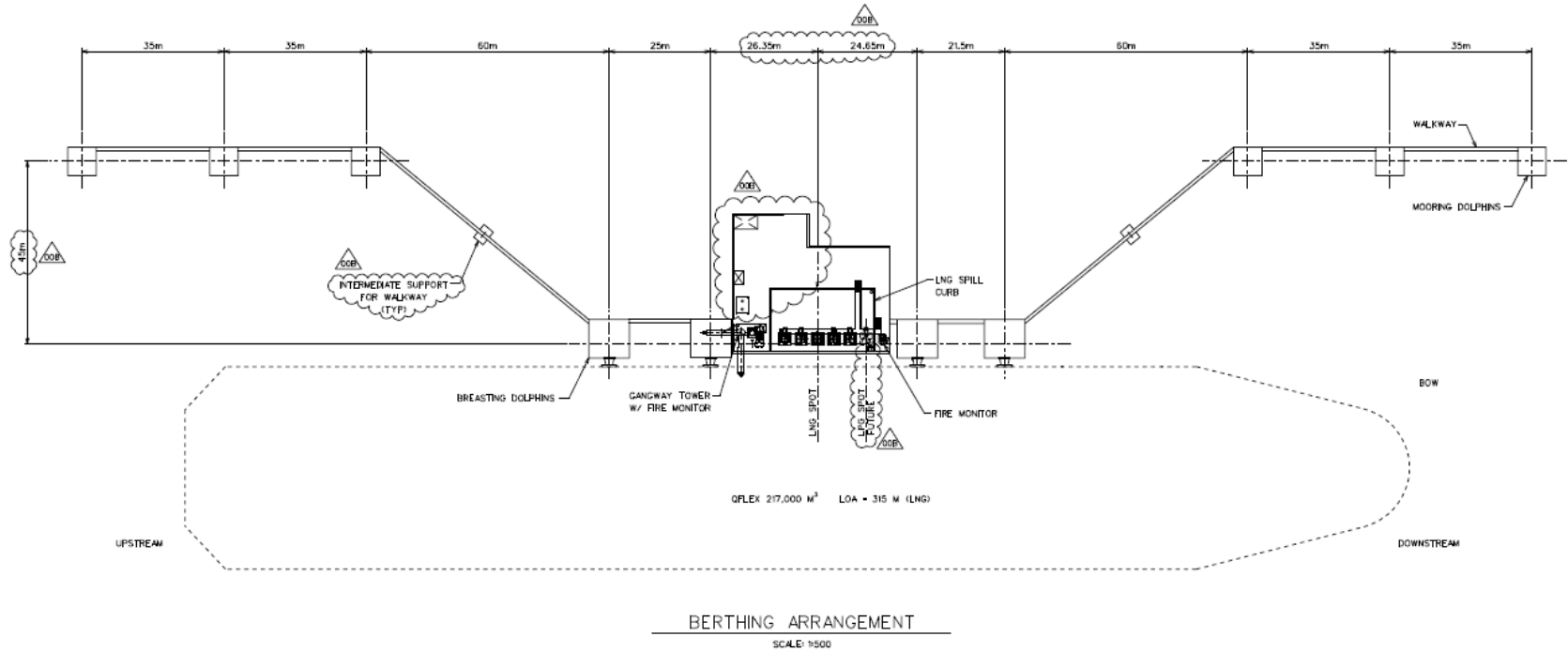


NOTES:

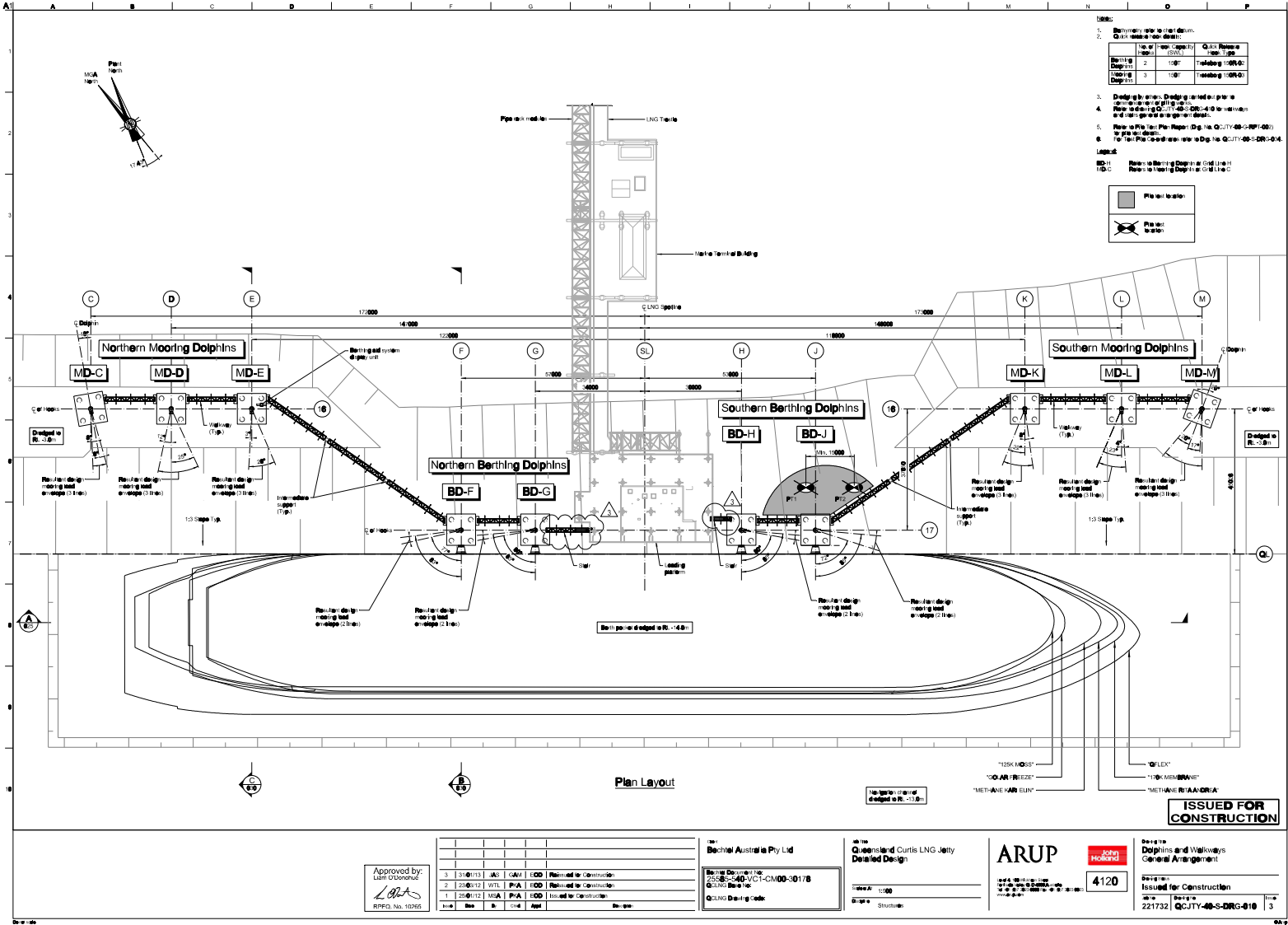
1. ALL COORDINATES REFER TO MGA GRID ZONE 56 (DATUM GD494).

2. ALL DIMENSIONS ARE IN METERS.

3. EQUIPMENT LOCATIONS, STRUCTURE CONFIGURATIONS & DIMENSIONS
DEPICTED ARE CONCEPTUAL & APPROXIMATE. DESIGN WILL BE
FINALIZED IN EPC.



9.16. QCLNG





9.17. GLNG

Please contact GLNG for current wharf configuration.